



www.tacomalakes.org

**TACOMA LAKES IMPROVEMENT SOCIETY NEWSLETTER
SPRING 2013**

Welcome to the spring 2013 Tacoma Lakes Improvement Society Newsletter. After the long winter we are all excited that summer is almost here. We have lots to share with you this spring!

ANNUAL MEETING

The Tacoma Lakes Improvement Society Annual Meeting and breakfast is scheduled for Saturday, July 13th 2013 at the Sportsman's Club in Litchfield. Mark your calendar now for this exciting event! The breakfast will start at 8:30 AM and end at 9:30 AM. The breakfast will be followed by a brief business meeting then speaker presentations. A silent auction will be held as a fund raiser and will include interesting and even delicious items. Litchfield town officials have been invited to attend. We hope to see you at this exciting event! Election of officers and directors will be held at the Annual Meeting.

2013 MEMBERSHIP DUES NOW DUE

Your 2013 membership dues remain at \$15.00. A membership application is included in the newsletter. Your board of directors would appreciate you mailing your application and dues payment in as soon as possible. We prefer not to receive dues for future years as our accounting system is designed for one year at a time. Thank you!

FIREWISE PROGRAM

The assessment of the Tacoma Lakes was presented at last year's annual meeting and is posted on our website. Town officials in Litchfield and Monmouth received copies. Thus far no action has been taken by either Litchfield or Monmouth. Society president Bruce Doyle is pursuing the matter with Litchfield town officials.



PRESIDENT'S LETTER

Spring 2013

Dear Members:

Excuse our enthusiasm, but your society is sending you this newsletter early this year! As your president I have chosen to propose to your board of directors a very busy agenda for 2013. We may not accomplish all that we propose but we certainly will not be faulted for lack of effort!

First and foremost I want to thank all of you for continuing to maintain your membership in our society. Last year was a record year for donations and we can't thank you enough for not only your membership, but the considerable extra donations made last year. Every last penny is used for TLIS activities and no directors or officers receive any compensation other than the satisfaction of knowing our efforts to maintain the Tacoma watershed will not only allow all of us, but hopefully our descendants, to enjoy the pleasures of our lake system.

We have posted to the TLIS website recent correspondence between TLIS and the Town of Litchfield indicating our displeasure with the town's failure over the past three years to maintain the Purgatory dam, despite recommendations at that time by the state's dam inspector. The only recommendation that was followed through was the construction of new gates and that was only through the diligent work of TLIS officers. A more recent inspection in March of this year by the same inspector noted most of the same concerns of three years prior. We have also posted to our website his current report, for your review. We intend to make sure by every means necessary that ALL recommendations made by the state's inspector are completed this year. That may mean expenditures on the part of TLIS; but it is my belief that our members would fully support such expenditures if it means maintaining and extending the longevity of the Purgatory dam, without which most of us would be staring at mud flats every day. Officers have recently met with town officials and hopefully I will have positive news to report to you at our annual meeting.

This year again your organization, with the support and assistance of the Friends of the Cobbossee Watershed, will continue to attack the milfoil infestation in Purgatory stream. In addition, we have taken the necessary actions to ensure that Director Buffy DeMatteis is again one of the primary milfoil inspectors at the Purgatory boat launch. We continue to have one of the highest boat inspection rates in the entire watershed.

Efforts have taken place over the winter to eradicate the beaver infestation in Jimmy stream. Unfortunately and despite the removal of at least four large beaver last year and two more this year, the beavers have successfully rebuilt the dam and at this time are maintaining a water level in the stream at least 10 inches higher than normal. The dam now in place will be extremely difficult to remove this year without considerable effort and it is doubtful that any type of boat traffic will successfully get through this dam. TLIS has approval from the Department of Inland Fisheries to hand remove the dam. If the dam is to be removed volunteers will need to step forward to do the work.

I hope to see many of you at the annual meeting. We will again have a silent auction, which was an extremely successful fund raiser last year. We would love members to help supply delicious items for the auction! Please contact Buffy DeMatteis if you can help. More details about the annual meeting are in this newsletter.

I would encourage you to utilize the services of the record number of businesses that have so generously supported your Society. They are for the most part local businesses owned by local people, who depend on your support to stay in business! Be sure to let them know you appreciate their support of your Society.

The dam was closed early this spring to allow for repairs to the downstream side of the dam. Members on the email list were notified of the early water rise immediately after town officials committed to the repairs.

We are sending out regular updates through much of the year by email. It is too time consuming and expensive to send the updates by regular mail. If you have an email address and have not provided it to us please send it to us at memberservice@tacomalakes.org. We will be happy to add you to the email list so long as you are a current member. Your email address will not be disclosed to any third party!

Lastly, I encourage you to ask your lakefront neighbors, particularly if they are new, if they are members of TLIS. If they are not members please encourage them to join. Suggest they check out our website, which is loaded with information. It's only through strength in numbers that we can be the influence we hope to be on what happens in our watershed! We would be glad to send the newsletter and an application to individuals you might suggest. Keeping our mailing list up to date is at times a herculean task!

Sincerely

Bruce Doyle
President - TLIS

TLIS LEADERSHIP

July 1, 2012 to June 30, 2013

PRESIDENT

Bruce Doyle
31 Doyle St
Litchfield, ME 04350
207-312-3698
bdoyles@roadrunner.com

VICE PRESIDENT

Bill Gartley
P O Box 103
Litchfield, ME 04350
207-268-4641
taco1@roadrunner.com

TREASURER

Harold F Potts Jr (Buddy)
7 Jeanne Marie Drive
Westfield, MA 01085
860-614-6321
memberservice@tacomalakes.org

SECRETARY

Karen Smith-Ahern
55 Madison Road
Windham, ME 04062
207-807-1758
kdsmith22@aol.com

DIRECTORS

Kurt Bechtel
apache1958@live.com

Joline Bell
jolinebell@gmail.com

Diane Clay
C112a3y4@gmail.com

Buffy DeMatteis
buffythelobsterslayer@yahoo.com

Charlie Manchester
charliemanchester@fairpoint.net

Pat Soboleski
psobo@roadrunner.com

VOLUNTEER INSPECTOR and TRAINER

Buffy DeMatteis
buffythelobsterslayer@yahoo.com

DAM KEEPER

Terry Averill
TBAverill@aol.com

TREASURER'S REPORT

Your Society had a very successful financial year in 2012. Membership is now the highest it has been in many years. We received outstanding support from donors and advertisers as well as grants from the state, Litchfield and Monmouth. Our final membership tally was 221, the highest in many years. Our year end surplus was \$4658.14, which helps us grow our reserve for future issues such as invasive plant mitigation. Our sincere thank you for every individual and business that supported your Society in 2012!

ANNUAL MEETING AUCTION

Who makes the top pie or dessert around the Tacoma Lakes? It could be you. Just look through your recipes and put your pastry to the test! At last year's annual meeting, pies were the hot sellers in our Silent Auction, so we want to give bakers a head start to prepare a pie or dessert for the July 13th meeting. Please include the name of your contribution with a list of ingredients, or with the full recipe if you are willing to share it.

And if you're not a baker..., what better way to enjoy a yummy pie than to bid on your neighbors' confections! Umm, umm, GOOD!

If you cannot bring your pie to the Sportsman's Club that morning, contact Buffy DeMatteis ahead of time to arrange for pick up at buffythelobsterslayer@yahoo.com or 352-422-3929. Thank you!

HELP WANTED!

Social media is one of the most popular activities on the Internet today. While TLIS has a website with a wealth of information we are not yet active in social media. It's time for us to share your Society's many activities and the hard work of our members and volunteers through social media. We are seeking a volunteer to maintain a TLIS page on Facebook. Can you help? If so please contact Buddy Potts at memberservice@tacomalakes.org.

2013 BASS TOURNAMENTS

Bass tournaments will be held again this year on the Tacoma Lakes. Please note that on tournament days the Woodbury Pond boat ramp will be very busy and parking will be at a premium. These are the scheduled dates:

<u>DATE</u>	<u>CLUB NAME</u>
Saturday May 11	Somerset Bassmasters
Saturday June 15	Southern Maine Anglers
Sunday June 30	Capital Area Bassmasters
Sunday July 21	Pine Tree Bass Casters
Friday August 2	Nite Bite Bassers
Sunday August 4	Rocky Coast
Saturday September 28	Ladies Day Out
Saturday October 12	Maine Country Bassers

YOU CAN HELP!

It is important to be involved in your Society so that you can contribute to the continued beauty of our lakes. Each of us should be responsible for getting our neighbors to become members, help with the various projects and/or contribute with ideas that can improve our lives around the lake year round. If you have a new neighbor, be sure to send them to our website or encourage them to send us an inquiry of how they can become involved. Also if you have ideas for TLIS and our lake area, be sure to pass them on. It is our work as a group that will help us maintain a wonderful place for all to enjoy year round.

FIREWORKS ARE A SERIOUS THREAT TO OUR LAKES AND OUR WILDLIFE!

This article is courtesy of the New Hampshire Department of Environmental Services.

Concerns of Health and Environmental Effects

There are growing concerns about the use of fireworks around New Hampshire's lakes. As fun and enjoyable as fireworks can be, they may be causing more damage than you know. Aside from the obvious danger of operating controlled explosives, what you may not realize is the effects fireworks have environmentally, economically and health wise.

Firework Ingredients and their Dangers

Fireworks are composed of many different elements, each contributing to the noise, color or propellant. While these ingredients combine to form a beautiful spectacle, many of them are very dangerous. Here's a list of a few common firework ingredients, their use, and what makes them so dangerous.

Toxic Element Fireworks Usage Toxic Effect of Fallout Dust & Fumes

Toxic Element	Fireworks Usage	Toxic Effect of Fallout Dust & Fumes
Lead Nitrate/Dioxide/Chloride	oxidizer	Bioaccumulation; developmental danger for children and the unborn; may remain airborne for days; poisonous to plants and animals
Barium	glittering greens	Extremely poisonous, radioactive
Lithium	blazing reds	Slightly toxic
Rubidium	purple colors	Slightly radioactive; can replace calcium in body
Strontium	blazing reds	Can replace calcium in body; can be radioactive
Copper compounds	blues	Dioxin pollution
Aluminum	brilliant whites	Contact dermatitis
Ammonium Perchlorate	propellant	Can contaminate ground and surface waters; can disrupt thyroid functions
Cadmium	firework colors	Extremely toxic, carcinogenic; can bioaccumulate
Potassium Nitrate	in black powder	Toxic dusts, carcinogenic sulfur-coal compounds
Sulfur Dioxide	gaseous byproduct of sulfur combustion	Acid rain from sulphuric acid affects water sources, vegetation and causes property damage

The Effects Fireworks have on You and Nature

The fallout of these different chemicals can affect you both directly and indirectly. Once a firework explodes in the sky, it does many things. The gases from the rocket and the explosion are released into the atmosphere, where they are inhaled by humans and animals, and hurt the ozone layer. In addition to the gases, the debris and burning metals fall back to earth where they litter the area, contaminate aquatic ecosystems, and poison the wildlife, eventually working their way up the food chain. The noise terrorizes wildlife and has caused bird kills.

How Phosphorus in Fireworks Impacts the Water

It has taken years to determine the dangers associated with the many ingredients in fireworks. Up until very recently, phosphorous (also found in fertilizers) was highly popular in fireworks until the realization of its associated problems to the environment. Although most manufacturers no longer incorporate more than trace amounts of phosphorus in fireworks, every little bit added to a lake can influence water quality. Phosphorus accelerates a process called eutrophication, which is the process that results in increased biomass, decreased lake clarity, decreased bottom oxygen, and increases the likelihood of cyanobacteria scums. Algal and cyanobacteria blooms caused by phosphorus introductions impact fisheries, drinking water supplies and impact the health of people who recreate in the waters as well as pets and any animal that drinks these waters.

The Final Impact

Altogether the damaging effect fireworks have is overwhelming. They impact water quality by affecting the odor and taste of drinking water. On the economic side, excessive algal and cyanobacteria growth due to phosphorus or contamination due to firework fallout increases water treatment costs, degrades fishing and boating activities, and impacts tourism and property values. The cost of damage done to property, the litter and the effect upon both wildlife and human life is incalculable. The Department of Environmental Services urges you to consider the effects of fireworks and perhaps find an alternative to a problem that is only growing with time.

The fact that Maine has legalized fireworks does not mean that we should ignore their toxic effects on our beautiful lakes and our wildlife. It's a quality of life issue for people and pets as well. Please don't use fireworks on or near the Tacoma Lakes!

Milfoil Control Efforts will Continue in 2013

Tamara Whitmore, FOCW Education & Programs Director

Variable-leaf Milfoil is an invasive aquatic plant that is not native to Maine and out-competes native water vegetation when exposed to our local lakes and ponds. Introduced by means such as boats, trailers and fishing equipment, the plant can reproduce quickly, can alter the freshwater ecosystem and can have drastic effects on wildlife, recreation and property values. Four connected water bodies within the Cobbossee Watershed have variable milfoil infestations: Pleasant Pond, Cobbossee Stream, Horseshoe Pond and Purgatory Stream.

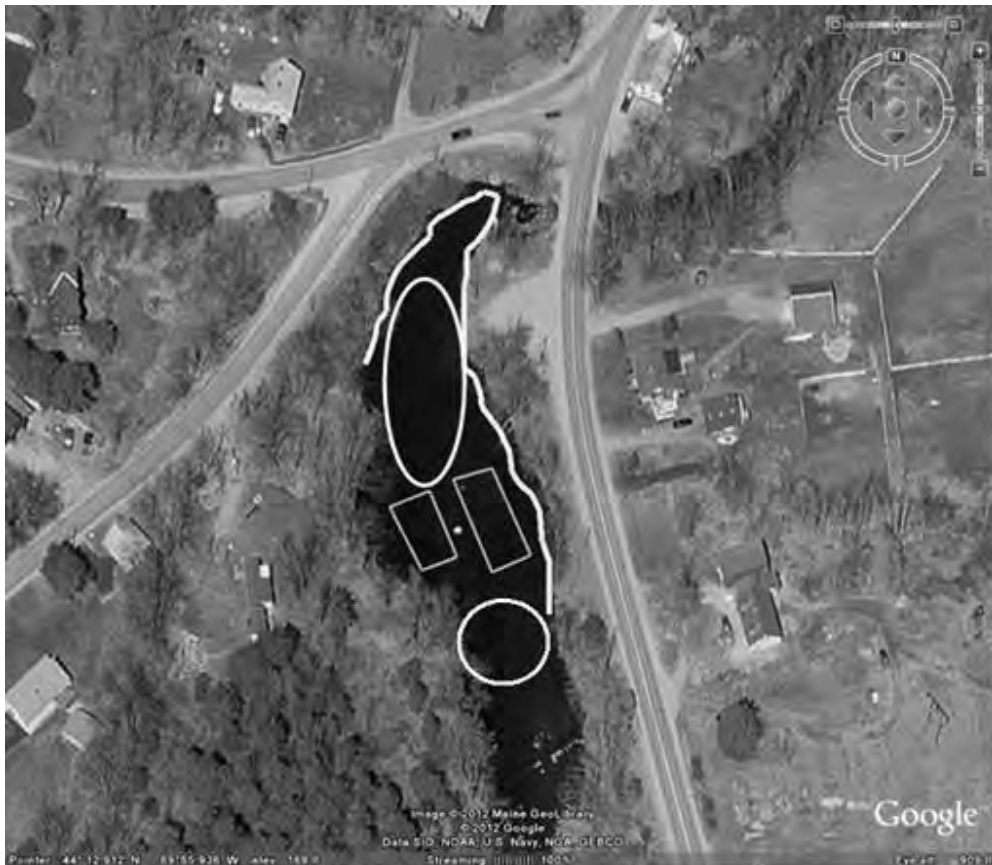
The Friends of the Cobbossee Watershed's "Milfoiler Program" is aimed at preventing the spread of invasive aquatic plants, detecting new infestations as early as possible, and reducing the extent of the existing infestations. As reported in the fall 2012 TLIS newsletter, 2012 was a stellar year for the Friends' Milfoiler program: conducting over 8,700 boat inspections, surveying mapping the variable milfoil infestations in Upper Pleasant Pond, Horseshoe Pond and parts of Cobbossee Stream, placing 80 milfoil mats in Purgatory Stream and removing over 11,400 gallons of variable milfoil combined from all four infested water bodies.

But it's no time to rest on our success of last year! In 2013 the Friends are planning to:

- **Survey** - Youth Plant Patrol survey efforts will be focused on the infested areas that were harvested in 2012, to determine the success of the first year of utilizing the Diver Assisted Suction Harvester, or DASH. Secondary efforts will be focused on areas suspected of infestations; primarily Lower Pleasant Pond, Cobbossee Stream between Pleasant and Horseshoe Ponds and Cobbossee Stream downstream of Pleasant Pond.

- **Harvest:** Will continue to focus on high priority areas of boat landings, channels, high traffic areas and densely populated shoreline areas. We hope to increase the number of harvesting days this summer (from 23 in 2012) but will be dependent on funding received. Regardless, smooth operational procedures established in 2012 should increase harvesting per day amount. The DASH will be staffed by FOCW staff, a contracted diver and volunteers as available.
- **Milfoil Mats in Purgatory Stream:** A survey of the effect of two years of milfoil mats placed in the stream will take place in May of 2013. We then intend to place (50 +/-) 10' x 20' milfoil mats in Purgatory Stream in late spring. If necessary, we will place another 30-50 mats in mid-summer. All mats will be removed by the end of September, 2013. These barrier efforts will be completed using a contracted diver, FOCW staff and Tacoma Lakes Improvement Society and FOCW volunteers.
- A **hand harvesting workshop for SCUBA certified** individuals is tentatively planned for early summer, to train potential area volunteers and/or staff members. The result of this training will also provide a volunteer hand pulling effort along the shoreline of Purgatory stream. If you are interested in participating in this workshop, please see the contact information below.

For more information about the Friends invasive plants efforts, or other programs, please contact the Friends Education & Programs Director, Tamara Whitmore: tamara@watershedfriends.com or Executive Director, John Blouin: john@watershedfriends.com or call the office at 207-621-4100.



Purgatory Stream – Litchfield, ME – Benthic Barrier Method

Rectangles = Mat locations in 2012

Circle = Anticipated area of mat locations in 2013

Shoreline Highlighting - Hand pulling area in 2011, 2012 and anticipated in 2013 as well

Oval = Additional hand pulling anticipated in 2013, to clean up areas re-established since 2011 mat installation project

THANK YOU FRIENDS OF COBBOSSEE WATERSHED

The Friends are an amazing partner to TLIS. Their work benefits our entire watershed, not just the Tacoma Lakes. The Friends provided the following services to TLIS last year, and will continue to do so in 2013.

Managed the paid inspectors, ensuring our boat launch was covered on holidays, Fridays, Saturdays and Sundays.

The Friends provided payroll service, insurance and payroll taxes for the paid inspectors working the Woodbury Pond boat ramp. TLIS only had to reimburse them for these costs.

Arranged for Friends staff and paid divers for the milfoil remediation on Cobbossee Stream. They also provided the benthic barriers. TLIS volunteers assisted. 2013 is the third year of this project. This remediation would have been impossible without the leadership and hard work from FOCW!

Filed reports on our behalf for the state grant.

If you are not a member of the Friends please consider joining today. Their membership is free. For details please visit their website at: www.watershedfriends.com.

THANK YOU DONORS!

Please note that membership dues only provide about 1/3 of our annual expenses. Our dues do not even cover our largest expense, the inspectors at the boat launch. Your board of directors would like to thank the members who have made donations in addition to your dues. These donations are an essential part of our ability to help protect our lakes. All donors are acknowledged on our website, which is updated regularly.

RETURNABLE CONTAINER DONATIONS

TLIS is continuing to welcome your returnable container donations that are being left in the blue barrels at the town recycling center. This remains one of our most important fund raisers. We raised \$334.00 from the returnable containers donated to the Society in 2012. If you could bag the containers in plastic bags prior to putting them in the barrels it would be greatly appreciated. Otherwise it can be somewhat of a messy job fishing them out and bagging them. Thank you!!

ILLEGAL ACTIVITIES ON JIMMY STREAM

The Kennebec County Sheriff's Office brought to our attention last year the fact that an illegal marijuana grow was taking place on land adjacent to Jimmy Stream and was being accessed by boat. Both the Sheriff's Office and the Maine Warden Service are aware of the situation and have a description of the watercraft being used in the illegal activity. That area will be kept under surveillance in 2013 by those departments for similar activity. Lake residents noticing any unusual activity should not hesitate to contact either department.

BUSINESS DONATIONS FOR THE ANNUAL MEETING AUCTION

The Tacoma Lakes Improvement Society is seeking donations from local businesses for auction items for our Annual Meeting silent auction. We welcome almost any item including gift certificates and discounts on business services. Food items are always appreciated! The auction has become an important fund raiser and will directly benefit the Society's important work. Please contact Bruce Doyle at 207-312-3698 for further information. Thank you for past auction items and we appreciate your support again this year!

WATER QUALITY SUMMARIES

Members are directed to the following websites to find lake information on the overall water quality ratings of the lakes in the Tacoma lake chain: <http://lakesofmaine.org> and <http://maine.gov/dep/blwq/lake.htm>. The Cobbossee Watershed District (CWD) in conjunction with the Maine Department of Environmental Protection (ME-DEP) and the Volunteer Lake Monitoring Program (VLMP) have collaborated in the collection of lake data to evaluate water quality, track algal blooms, and determine water quality trends. The dataset does not include bacteria, mercury, or nutrients other than phosphorus.

For those without internet access:

- The water quality of Little Purgatory Pond is considered slightly below average with a potential for nuisance algal bloom of low.
- The water quality of Woodbury Pond is considered to be above average with a potential for nuisance algal blooms of low to moderate.
- The water quality of Sand Pond is considered above average with a potential for nuisance algal blooms of low.
- The water quality of Buker Pond is considered average with the potential for nuisance algal blooms of medium to high.
- The water quality of Jimmy Pond is considered to be slightly below average with a potential for nuisance algal blooms of moderate.

PLANT PATROL REPORT

I guess we're all waiting for summer 2013 to begin. The ice is out, the tiny plants are sprouting around the lake, so it can't be long before boating season! Just think about putting your boat in the water for the first time, getting into your canoe or kayak to enjoy the beauty above and below the surface of our beautiful chain of lakes. Makes you grateful to live here, doesn't it?

Along with the enjoyment comes a desire to make sure our lakes remain as pristine in the future as they are now. I'd like to suggest two opportunities to those who either live on the Tacoma Lakes or recreate here.

First, the TLIS Invasive Plant Patrol Team is planning a little cocktail party to meet people from each lake who may want to learn a bit about aquatic plants. The get together will be 6pm May 3rd at Diane Clay's, 6 Easy Street beside Buker Pond. We'll have some light appetizers and drinks while getting to know each other and plan an upcoming plant paddle. Please email Buffy DeMatteis at buffythelobsterslayer@yahoo.com or call 352-422-3929 and leave a message if you'd like to join us.

The second opportunity is for those who have some free time to spend a few hours at the boat launch on Woodbury Pond on a rotating basis to inspect boats and trailers and prevent invasive plants from entering our lakes. The training is easy. As above, please contact Buffy if you are willing to help. Prevention is the first and least expensive method of protecting our lakes!

BOAT RAMP REPAIRED

This spring Dam Keeper Terry Averill noticed a potentially dangerous issue at the Woodbury Pond boat launch. There was a piece of steel pipe sticking up at the end of the concrete ramp that could easily pierce a hull. The state was notified and the Bureau of Public Lands dispatched someone to look at and correct the issue. The pipe was removed and a load of crushed gravel was placed at the end of the ramp. The launch is now safe to use.

FISH STOCKING UPDATE

Maine's Department of Inland Fisheries and Wildlife maintains a number of fish hatcheries in this state, which it uses to maintain an aggressive stocking program for Maine lakes. That program can be found at <http://www.maine.gov/ifw/fishing/reports/stocking/index.htm>. Ice fishermen have reported nice catches of brook trout during the 2012/2013 season, which is probably attributable to last year's stocking program in the Tacoma Lake Chain. We would anticipate that this year's stocking dates and amounts will be very close to last year so get those rods and reels cleaned and ready to fish!

2012 Stocking Program for Tacoma Lake Chain

Date	Water	Species	Quantity	Size
04/11/2012	Sand Pond	Brook Trout	400	10"
04/24/2012	Sand Pond	Brook Trout	400	10"
10/23/2012	Sand Pond	Brook Trout	175	13"
10/31/2012	Sand Pond	Brook Trout	250	12"
04/24/2012	Woodbury Pond	Brook Trout	300	10"
10/22/2012	Woodbury Pond	Brook Trout	300	13"
10/23/2012	Woodbury Pond	Brook Trout	100	13"
10/31/2012	Woodbury Pond	Brook Trout	250	12"

The Tacoma Lake chain falls under the general law and regulations. The regulations can be found at this website: <http://www.eregulations.com/maine/fishing/>. Please do not hesitate to contact DIFW at 207-287-8000 should you have any questions in regards to these regulations.

IMPORTANT PHONE NUMBERS AND WEBSITES

Latest information always on: www.tacomalakes.org

Emergency Phone (Fire, Police, Ambulance) 911

Litchfield Town Office	207-268-4721 FAX: 207-268-2196
Litchfield Town Transfer Station	207-268-9164
Litchfield Animal Control	207-818-3505 (pager) or 207-713-7249
Litchfield Post Office	207-268-4088
Monmouth Town Office	207-933-2206 FAX: 207-933-3413
Monmouth Police & Animal Complaints	207-933-9089
Inland Fisheries & Wildlife (Game Warden)	207-287-8000
Operation Game Thief (Poacher Hotline)	800-253-7887
Maine Fire Marshall's Office	207-626-3870
State Police (non-emergency)	800-207-452-4664
Kennebec Sheriff's Office (non-emergency)	800-498-1930
Tacoma Lakes Improvement Society	207-312-3698
Dept. Environmental Protection (Permitting)	800-452-1942
Friends of Cobbossee Watershed	207-621-4100

IMPORTANT WEB SITES

Litchfield Town Office	www.litchfieldmaine.com
Monmouth Town Office	www.monmouthme.govoffice2.com/
Maine State Government	www.maine.gov
Friends of Cobbossee Watershed	www.watershedfriends.com
Maine Volunteer Lake Monitoring Program	www.mainevlmp.org

VLMP

The Mission of the Maine Volunteer Lake Monitoring Program is to help protect Maine lakes through widespread citizen participation in the gathering and dissemination of credible scientific information pertaining to lake health. The VLMP trains, certifies and provides technical support to hundreds of volunteers who monitor a wide range of indicators of water quality, assess watershed health and function, and screen lakes for invasive aquatic plants and animals. In addition to being the primary source of lake data in the State of Maine, VLMP volunteers benefit their local lakes by playing key stewardship and leadership roles in their communities.

ILLEGAL FISH STOCKINGS THREATEN MAINE LAKES AND RIVERS

Maine's lakes and rivers have been plagued with an epidemic of illegal fish introductions that pose real and immediate threats to our native fish fauna. Some recent examples:

Northern Pike, illegally introduced into the Belgrade Chain of Lakes in the 1970's, are now present in at least 16 lakes in the Kennebec, Androscoggin, and coastal river drainages. They are suspected to occur in several additional waters. Pike are voracious predators on other fishes, and their presence in one lake is suspected of destroying one of the state's premier landlocked salmon populations.

Important president's note: I have an unconfirmed report that a northern pike was caught in the Tacoma Lake chain this past year. I hope this is not true; however, should you catch any type of pike or large pickerel and are unsure of what it is, please notify me at 207-312-3698 or the Maine Warden Service so that it can be identified.

Smallmouth and largemouth bass are both non-natives but widely established in southern, central, and parts of eastern Maine. Since 1986, Maine fishery biologists have determined that illegal introductions have established new populations in 57 additional lakes! One of these illegal stockings occurred at Umbagog Lake in the upper Androscoggin River drainage, where they now threaten one of our nation's premier wild brook trout populations. Largemouth bass are being illegally introduced into many Downeast waters at an alarming rate with unpredictable consequences to long established, economically important smallmouth populations.

The Black Crappie is an exotic species that until recently was restricted to about a dozen lakes in the Presumpscot and Sebasticook River drainages. Since 1985, illegal stockings have expanded their range to 65 lakes in the Penobscot, Kennebec, and Androscoggin River drainages. Larger crappies are fish predators and may compete with native species.

Bluegill and Green Sunfish, both exotics, have only recently been discovered in several Maine lakes and streams. In 2002 both species were discovered in a small pond in central Maine - they had out-migrated to a stream that supports a fine native brook trout population, and they will soon colonize a large headwater lake in the Sebasticook River drainage. Their effects on native fish species are unknown.

Unauthorized introductions of invasive, exotic fish species are particularly destructive to Maine's native brook trout populations, but they may also cause irreversible changes to entire aquatic ecosystems by restructuring plankton and forage fish communities that have evolved since the last glacial retreat.

The illegal introduction of any fish into any Maine water is a Class E crime, punishable by fines up to \$10,000! The Maine Department of Inland Fisheries and Wildlife is offering a minimum reward of \$2,000 for information leading to the apprehension of persons responsible for the illegal introduction of fish. Call Operation Game Thief at 1-800-253-7887.

Submitted by:

David Boucher, Fishery Biologist, Maine Department of Inland Fisheries and Wildlife, Rangeley Lakes Regional Headquarters, Strong, ME

PLEASE SUPPORT OUR SPONSORS. THANK YOU!

Waterman Farm Machinery Co., Inc.

CASE IH

The excellent source for parts, sales & service
In Business Over 46 Years



Cub Cadet

Jim Waterman

Rte 126
827 Sabattus Road
Sabattus, ME 04280

GEHL

BUSH HOG

WOODS

TEREX

Telephone: (207) 375-6561
Tel / Fax (207) 375-4121
Main Wats: 800-439-6561
sales@watermanfarmmachinery.com



NURSERIES and FARM & GARDEN MARKET

www.roaringbrooknurseries.com

JIM & KRISTEN CLAZIER
207-375-4884

639 CARDINER RD.
WALES, ME 04280

Nelly's Tractor Works

Nelson "Nelly" Gamage-Litchfield, ME 04350

Gravel Roads, Yards, Driveway, Maint/Repairs:
Drainage, Erosion Control, Grading

Front Runner, 1-Ton 4WD, Dump Truck Serv.
4WD Tractor Loader, Bushhogging

Low Overhead: Insured

H: 207-268-2877

Cell: 207-458-1938

CHILLY DILLY'S



EAT IN OR TAKE OUT

FEATURING GIFFORDS ICE
CREAM AND HOT/COLD SUBS

1847 HALLOWELL RD. LITCHFIELD ME

(207) 268-2127

OWNERS BILL AND SARAH WATERMAN

Lina's Pet Resort

Pamper Your Pet



1372 Hallowell Road
Litchfield, ME 04350

Office 207-268-4257
207-268-9271
207-557-3409

Dragonfly Country Design



Arts, Antiques, Crafts
Maine Made Items & Gifts

Mary Jane Dillingham
Owner

P.O. Box 338
1843 Hallowell Road
Litchfield, ME 04350
dragonflydesign@fairpoint.net
T: 207-268-9074

B-K Auto

SALES & SERVICE. PLENTY USED TIRES

BILL KELLEY

OWNER



2290 HALLOWELL RD.
LITCHFIELD
MAINE 04350
207-268-2163
207-837-8805
capt1022@yahoo.com

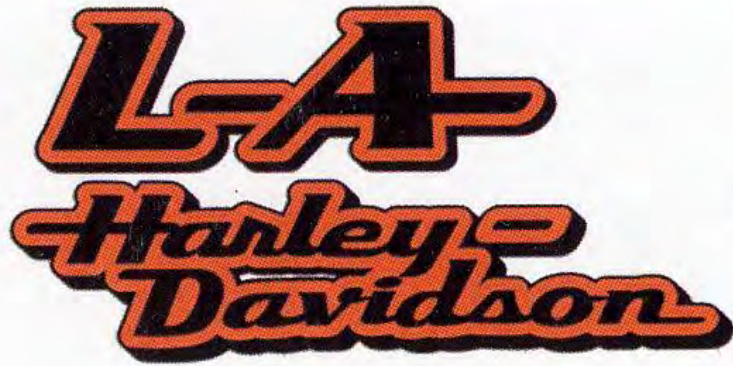
DAN STANLEY'S SEPTIC SERVICES



- Septic Tanks Pumped
- Grease Traps Pumped
- Repairs
- State Certified Inspection
- Commercial and Residential

1282 West Road
Litchfield, ME 04350

BUS: 268-2121
1-866-720-3545
Cell: 660-2100



John Story
Managing Partner
john@l-aharley.com

839 Main Street
Lewiston, ME 04240
Phone: (207) 786-2822
Fax: (207) 784-1396



www.l-aharley.com

*Your Neighbor
on Tacoma Lakes*



FONTAINE

"The Real Estate Leader"
336 Center Street, Auburn

*When you want your property sold
for TOP DOLLAR & FASTER...*

Call 784-3800

Litchfield Country Store



268-9910

LOCATED ON THE CORNER OF
ROUTE 126 & HALLOWELL ROAD
LITCHFIELD, MAINE

Larrabee Marine

773 Lewiston Road West Gardiner, ME 04345-3307

Gary & Brenda Larrabee

207 582 3452

207 582 7242 fax

info@larrabemarine.com

www.larrabemarine.com

Sales: Glastron, Lowe, Mercury, Mercruiser, Volvo Penta
Parts & Service: Polaris, Johnson, Evinrude, OMC



Chestnut Hill Cabinetry

Custom Hardwood Furniture
Monmouth, Me.

(207) 754-8814

<mailto:jeanpratte@gmail.com>

Jean Pratte

Owner

BUY · SELL · TRADE



353-7277

RTE. 196
LISBON FALLS

doublediamondpawn.biz



Markee Welding & Custom Fabrication

125 Carver Road
Monmouth, ME 04259

Chris Markee

933-3895

PERCY'S HARDWARE COMPANY

483 RICHMOND ROAD

LITCHFIELD, ME 04350

207-268-9181

WWW.PERCYSHARDWARE.COM

We are a family owned hardware store in Litchfield, ME. We are located next to Gowell's Store on Rt. 197. The store is filled with the stuff you don't even know you need yet. Stop by today!

EMERY'S MEAT AND PRODUCE

Route 126

South Monmouth

207-933-8010

Located at the corner of Oak Hill Road and Route 126, next to the South Monmouth Market.

Hours: Tuesday through Friday 9:00 to 6:00.
Saturday 9:00 to 4:00.

We specialize in locally grown free range meats and all natural produce. We also carry a variety of western meats.

Free Estimates
(207) 783-1040

Gerry Dion

Gerry's Tree Service

Tree Removal - Stump Grinding

Lot Clearing
Tree Chipping
Firewood Available



TACOMA LAKES IMPROVEMENT SOCIETY

2013 MEMBERSHIP DUES: \$15.00.

Thank you for your membership in the Society. Your membership dues are essential to support our many activities. Together all of us can help to keep Tacoma Lakes beautiful and healthy.

NAME: _____

STREET: _____ (Mailing Address)

TOWN: _____ STATE: _____ ZIP: _____

E-MAIL ADDRESS: _____ OK TO E-MAIL? _____

Please write legibly!

E-Mail address is not a membership requirement. Your e-mail address allows us to provide you with regular updates regarding Society activities. We will keep your e-mail private and will not share it with any other organization. If you have already provided your e-mail we do not need it again. Thank you!

POND PROPERTY IS LOCATED ON: _____

DUES: _____ DONATION: _____ TOTAL ENCLOSED: _____

Thank you for considering a donation to help us continue our important work.

We appreciate paying only 2013 dues. Our accounting software works best if dues are paid one year at a time. Thank you!

Please mail this completed application along with your check payable to Tacoma Lakes Improvement Society to:

Tacoma Lakes Improvement Society
P O Box 293
Litchfield, ME 04350

Can you help? We are seeking volunteer boat inspectors. Free training is provided. If you are interested, please indicate your interest below and we will contact you:

Please contact me, I'm interested: _____

WE APPRECIATE YOUR MEMBERSHIP!

GETTING A NEW MOTOR FOR YOUR BOAT?

The Time is Now

If you are thinking about getting a new boat motor, the time is now! Get rid of your old two stroke engine and buy a new four stroke boat motor. Do it for your lake's sake, do it for your own pleasure.

Maine has thousands of lakes and ponds and until recently, most outboard engines and personal watercrafts were powered by conventional carbureted two-stroke engines. These engines are VERY inefficient in their use of gasoline. As much as 30 percent of the fuel passes through the combustion chamber unburned and is released into the lake! Unburned gasoline pollutes the air and gasoline in our lakes adds benzene and other toxins.

The new four stroke engines are better for the environment, they are much more fuel efficient, easier to maintain and they save money. Just imagine no more fuel mixing! No more fouled spark plugs while out in the middle of the lake! No more smoke and oil from the back of the boat! No more exhaustion on the first day of the season, trying to get the engine started. Most importantly, four stroke engines are almost silent when idling. So if you love fishing, you no longer need to take along a trolling motor.

Just enjoy the quiet solitude of our lakes.

The benefits of a four stroke engine are clear:

- They burn 35% to 50% less gas.
- Use up to 50% less oil.
- Save Money, \$ over the lifetime of the engine.
- Reduce air pollution by 75%.
- Reduce pollution of our lakes.
- They are easier to start and have a quicker throttle response.
- Reduce smoke and fumes.
- They are less disruptive of the wildlife or the neighbors .
- The drawbacks?
- They are so quiet that at first you won't know that it is on!
- They cost more money, but it is worth every penny. Do it now, for your lake's sake

PLEASE MAIL YOUR 2013 MEMBERSHIP APPLICATION AND DUES TODAY!

Tacoma Lakes Improvement Society
P O Box 293
Litchfield, ME 04350-0293